

Flat 3, 80 Manley Road, Whalley Range, Manchester, M16 8ND



JP&Brimelow
ESTATE AGENTS

Offers In The Region Of £150,000

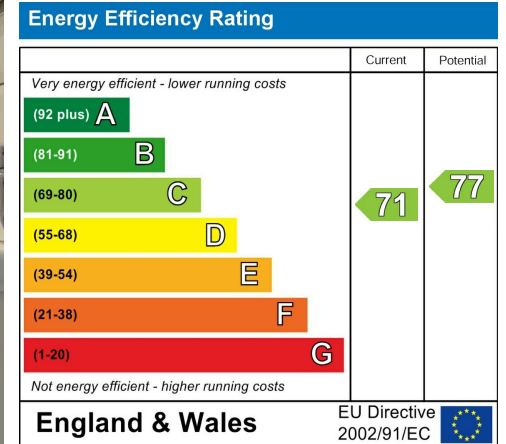
 1  1  1  c

VIDEO TOUR AVAILABLE A well-presented, ONE DOUBLE BEDROOMED, top floor apartment within this attractive period conversion situated in this quiet and leafy location off Withington Road here in Whalley Range. A stone's throw from Alexandra Park, a ten-minute walk to nearby independent bars/restaurants including 'The Hilary Step' bar on Upper Chorlton Road, Tesco Metro is nearby on Withington Road and fantastic transport links on Alexandra Road South giving you direct access into the City Centre. The apartment comprises; communal entrance hallway, stairs leading to all floors. A private entrance hall, a lounge/dining room with a bay window to the front aspect, a beautifully fitted kitchen, a double bedroom with useful built in storage cupboard and a modern white three-piece bathroom suite. The apartment benefits from being warmed by gas fired central heating and an enclosed resident communal lawned garden to the rear aspect. Would ideally suit a first-time-buyer or professional couple and early viewing is highly recommended.



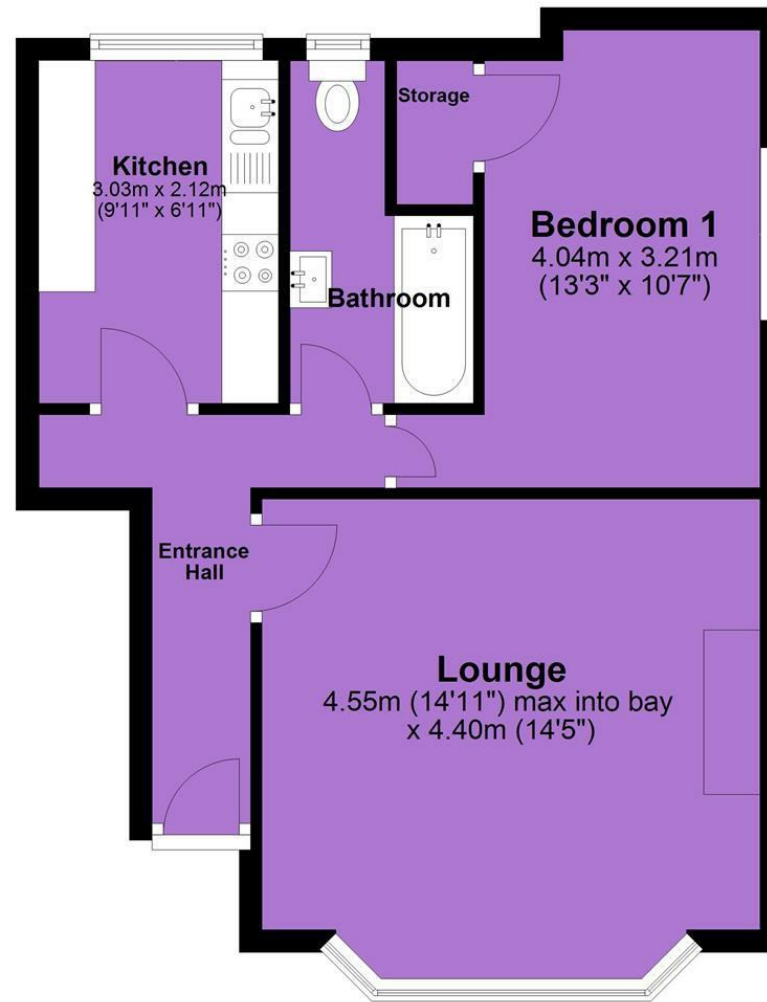


EPC Chart



Tenure: **Leasehold** Council Tax Band: **A**

Second Floor



JP & Brimelow Estate Agents Ltd
 430 Barlow Moor Road, Manchester, M21 8AD
 Tel: 0161 8822233
 E: sales@jpbrimelow.co.uk www.jpandbrimelow.co.uk



JP & Brimelow
 ESTATE AGENTS

NOTICE: JP & Brimelow Estate Agents Ltd for themselves and for the vendors or lessors of this property whose agents they are give notice that:

- (i) the particulars are set out as a general outline only for the guidance of intending purchasers or lessees, and do not constitute, nor constitute part of, an offer or contract;
- (ii) all descriptions, dimensions, references to the condition and necessary permissions for use and occupation, and other details are given in good faith and are believed to be correct but any intending purchasers or tenants should not rely on them as statements or representations of fact but must satisfy themselves by inspection or otherwise as to the correctness of each of them;
- (iii) no person in the employment of JP & Brimelow Estate Agents Ltd has any authority to make or give any representation or warranty whatever in relation to this property.

jpandbrimelowestateagents

@jpandbrimelow